



Spécialiste en Galvanisation / Galvanizing Specialist

*Distributeur exclusif en Amérique du Nord, au Mexique, en Nouvelle-Zélande et en Australie
Canadian exclusive master distributor for North America, Mexico, New Zealand and Australia*

297 rue Gendron, C.P. 123, St-Léon-le-Grand, Qc, Canada G0J 2W0

Téléphone / Phone: **418-743-2046**

Sans frais / Toll free: **1-888-743-2046**

info@galvatech2000.com

galvatech2000.com

GALVATECH 2000'S HISTORY AND EXPERTISE WITH THE RUST-ANODE PRIMER® TECHNOLOGY

TRANSPORT / ROADS / STRUCTURES

FOR FUTURE PROJECTS THINK DIFFERENTLY

- **UNIQUE HIGH-PERFORMANCE TECHNOLOGY**
- **NOT COMPARABLE TO STANDARD COATINGS**
- **MINIMUM SURFACE PREPARATION**
- **SINGLE COAT APPLICATION**
- **RE-GALVANIZING PROCESS**
- **PERFORMS OVER RUST**
- **PERFORMS IN SALTED AND UNSALTED ENVIRONMENTS**
- **MARINE INDUSTRIAL GALVANIZED COMPOUND
APPLICABLE OVER ALL TYPES OF METAL SUBSTRATES
INCLUDING ALUMINUM AND IRON CASTINGS**

**GALVATECH 2000 IS THE EXCLUSIVE MASTER DISTRIBUTOR OF THE
RUST-ANODE TECHNOLOGY IN NORTH AMERICA**

TECHNICAL SUPPORT WITH QUALIFIED NACE TRAINING TECHNICIANS

COLLABORATION WITH PROJECT MANAGERS FOR THE PREPARATION OF TECHNICAL DOCUMENTS

TRAINING FOR THE UNDERSTANDING OF THE CORROSION CONTROL MECHANISMS

SUPPORT FOR THE APPLICATION OF THE RUST-ANODE PRIMER® TECHNOLOGY

CHAIN OF SUB-DISTRIBUTORS IN CANADA

RUST-ANODE PRIMER

TESTED BY INDEPENDENT LABS

<u>Tests</u>	<u>Standards</u>	<u>Rust-Anode Primer</u>
Organic Rich Zinc	ONGC -1,181/CAN/ CGSB-1.181-92	Conform
Abrasion	ASTM D4060-14 1000 cycles CS10, load 1000g	116 mg
Pull-Off strenght	ASTM D4541	1200 Psi 8.27 MPa
Adhesion	ASTM D3359	5B Excellent
Hardness	ASTM D3363	5H Excellent
Impact	ASTM D2794, 100 lbs, impactor 0,625''	No cracks
Flexibility - Folding - Plasticity	ASTM D522, Tapered mandrel 1/4, 180°	Bend resistance: ¼'' Elongation: 15%

<u>Tests</u>	<u>Standards</u>	<u>Rust-Anode Primer</u>	<u>Hot-Dip Galvanized</u>
Corrosion by immersion	ASTM G44-99 (2013), 3,5% Sodium Chloride, 90 days	Blister: None Corrosion: < 0.03%	Blister: None Corrosion: 33%
Cyclic Corrosion test	ASTM D5894-10 with cold cycles, 10,000 hours	Blister: None Corrosion: < 0.01%	Blister: None Corrosion: < 0.01%

Tests available upon request

Atmospheric Corrosion Rates

The Rust-Anode Primer is designed for corrosive environments in the C5 category ⁽¹⁾

Corrosion catégories	Examples of typical corrosion environments
C1 Very Low	<ul style="list-style-type: none"> ➤ Heated buildings with clean atmospheres, e.g. office, shops, schools.
C2 Low	<ul style="list-style-type: none"> ➤ Unheated buildings where condensation may occur, e.g. depots, sports halls. ➤ Atmospheres with a low level of pollution. Mostly rural areas.
C3 Middle	<ul style="list-style-type: none"> ➤ Production rooms with high humidity and some air pollution, e.g. food-processing plants, laundries, breweries and dairies. ➤ Urban and industrial atmospheres, moderate sulfur dioxide pollution. ➤ Coastal areas with low salinity.
C4 High	<ul style="list-style-type: none"> ➤ Chemical plants, swimming pools, coastal ship and boatyards. ➤ Industrial areas and coastal areas with moderate salinity.
C5 Very High ⁽¹⁾	<ul style="list-style-type: none"> ➤ Buildings or areas with almost permanent condensation and with high pollution. ➤ Coastal and offshore areas with high salinity.
C5 Industrial ⁽¹⁾	<ul style="list-style-type: none"> ➤ Industrial areas with high humidity and aggressive atmosphere. ➤ Buildings or zones with permanent condensation and high contamination.
C5 Marine ⁽¹⁾	<ul style="list-style-type: none"> ➤ Coastal areas maritime zones with high salt content. ➤ Buildings or zones with permanent condensation and high contamination.

(See our expertise with the Rust-Anode Primer)

***⁽¹⁾ C5, C5-I, C5-M:**

Depending on the project types, it could be necessary to use duplex to achieve long-term protection in the following environments:

- In highly acidic or highly alkaline environments
- In highly corrosive soils

OFFERED SERVICES BY THE GALVATECH 2000 TEAM:

- Technicians services for the elaboration and realization of your projects.
- We provide training in engineering and architects' firms as well as private companies on corrosion mechanisms and the Rust-Anode technology.
 - ✓ For engineers, we can issue a formation certificate that can be deducted from permanent professional learning hours.
- We participate in writing specifications for the use of Rust-Anode Primer, involving decontamination, surface preparations, application and inspection methods.
- Visual inspection services to determine the severity of corrosion and the possibility of using the Rust-Anode Primer technology.
- Training and certification of applicators.
- Training and certification of distributors.
- We support your team to develop pilot programs.
- We provide solutions with technical support and help to plan maintenance programs.



OUR EXPERTISE

Rust-Anode Primer used with polyurethane coatings



City Ancienne-Lorette 2014
Multifunction dumper truck



City St-Augustin-de-Desmaures
2016

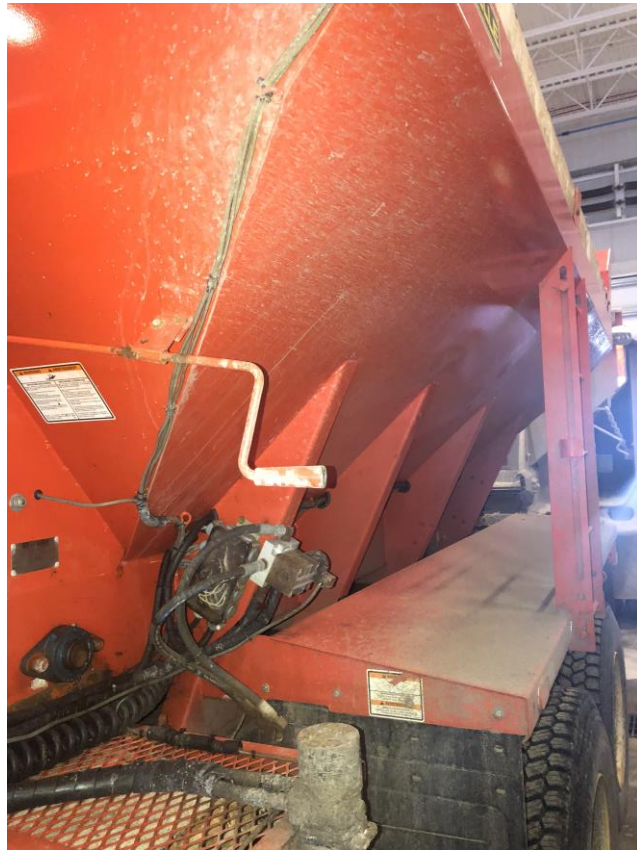
Québec – Canada

Spreader - Quebec City International Airport (YUL) 2010-2019



In 2010, Quebec City **International Airport** bought a new sand and salt spreader. They requested to apply the Rust-Anode Primer technology on the entire box.

In perfect condition 9 years later even after use in a corrosive environment.



Morneau Transport 2013 – 2019



Our galvanizing technology is used in continuous maintenance on the Morneau Transport fleet.

Tractors and trailers that are used to the



transportation of goods and confronted to gravel roads to reach the mines of Northern Quebec daily.



Quebec – Canada

Latest Canadian armoured vehicle 2017



In this particular project, Rust-Anode Technology has been top coated with military paint. (CARC)

Outside shell parts have been protected against corrosion with the Rust-Anode Primer.

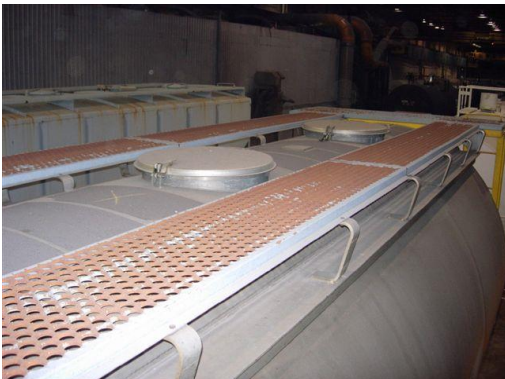


Quebec – Canada

PROCOR - Refrigerated railcar

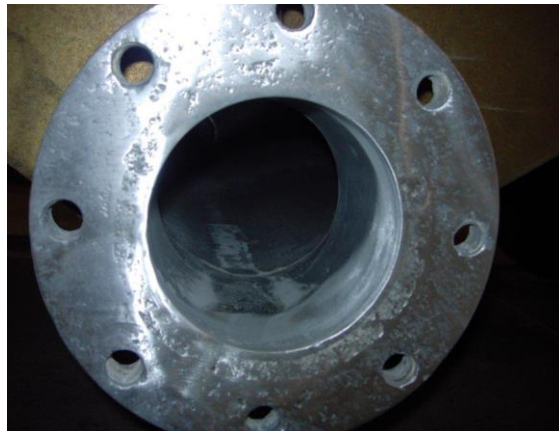


Refrigerated interior railcar roofs refurbished with rust-anode primer Rust-Anode Primer



Pedestrian gratings for wagons

Flanges for connections



Other achievements



Toronto Pearson International Airport (YYZ)

Airport Boarding Bridge.

Parks Canada

Bins used for hazardous material that needs transport by ship.



Containers



This type of product is being put to the test during its use and can result in rapid degradation including the appearance of rust and/or corrosion. The use of the Rust-Anode Primer is perfectly designated for this use.





Distributeur exclusif en Amérique du Nord, au Mexique, en Nouvelle-Zélande et en Australie
Canadian exclusive master distributor for North America, Mexico, New Zealand and Australia

297 rue Gendron, C.P. 123
Saint-Léon-le-Grand, Qc, Canada G0J 2W0

Téléphone/Phone: 418-743-2046
Sans frais/Toll-free: 1-888-743-2046

Télécopie/Fax: 418-743-2045

www.galvatech2000.com

info@galvatech2000.com

Galvatech 2000's team



CONCLUSION

- **RUST-ANODE, ONE COAT SYSTEM, IS A TRUSTED PRODUCT WHEN IN NEED OF A HIGH CORROSION RESISTANCE COATING ON BRIDGES AND MARINE ENVIRONMENTS.**
- **IMAGINE THE EXPECTED LIFETIME OF SUCH A SYSTEM ON LESS CORROSIVE ENVIRONMENTS**
- **RUST-ANODE RELOADS IN ZINC YOUR WORN-OUT GALVANIZED STRUCTURES TO SUSTAIN THE ORIGINAL CATHODIC PROTECTION. TRADITIONAL PAINT SYSTEMS ARE ONLY PASSIVE BARRIERS PROTECTIONS**
- **OUR EXPERIENCED TEAM OFFERS YOU AN OUTSTANDING TECHNICAL SERVICE THAT WILL ACCOMPANY YOU BEFORE, DURING AND AFTER YOUR PROJECTS**