



Spécialiste en Galvanisation / Galvanizing Specialist

Distributeur exclusif en Amérique du Nord, au Mexique, en Nouvelle-Zélande et en Australie
Canadian exclusive master distributor for North America, Mexico, New Zealand and Australia

297 rue Gendron, C.P. 123, St-Léon-le-Grand, Qc, Canada G0J 2W0

Téléphone / Phone: **418-743-2046**

Sans frais / Toll free: **1-888-743-2046**

info@galvatech2000.com

galvatech2000.com



GALVATECH 2000

IS OFFERING A PRE-APPLICATION EVALUATION PERFORMANCE TEST WITH PROFESSIONAL REPORT

Using the Rust-Anode Primer Technology

DESCRIPTION REVIEWED IN THIS DOCUMENT

EVALUATION METHODS

ALL TESTS ARE PERFORMED AND SUPERVISED BY NACE CERTIFIED TECHNICIANS

Inspect the X-cut area for removal of coating from the substrate or previous coating and rate the adhesion following the following scale:

ASTM D3359

5A No peeling or removal.

4A Trace peeling or removal along incisions or at their intersection.

3A Jagged removal along incisions up to 1.6 mm (1/16 in.) on either side.

2A Jagged removal along most incisions up to 3.2 mm (1/8 in.) on either side.

1A Removal from most of the area of the X under the tape.

0A Removal beyond the area of the X.

ASTM D6677

10 Coating is **extremely** difficult to remove; fragments no larger than approximately 0.8 by 0.8 mm (1/32 in. by 1/32 in.) removed with great difficulty.

8 Coating is difficult to remove; chips ranging from approximately 1.6 by 1.6 mm (1/16 by 1/16 in.) to 3.2 by 3.2 mm (1/8 by 1/8 in.) can be removed with difficulty.

6 Coating is somewhat difficult to remove; chips ranging from approximately 3.2 by 3.2 mm (1/8 by 1/8 in.) to 6.3 by 6.3 mm (1/4 by 1/4 in.) can be removed with slight difficulty.

4 Coating is somewhat difficult to remove; chips above 6.3 by 6.3 mm (1/4 by 1/4 in.) can be removed by exerting light pressure with the knife blade.

2 Coating is easily removed; once started with the knife blade, the coating can be grasped with one finger and easily peeled to a length of at least 6.3 mm (1/4 in.).

0 Coating can be easily peeled from the substrate to a length greater than 6.3 mm (1/4 in.).

SURFACE PREPARATION

STANDARD PROCEDURE NORMS

SSPC-SP1 solvent cleanin

SSPC-SP2 handtools cleaning

SSPC-SP3 power tools cleaning

BRESLE TEST (SALTS)

Location #1 - Cross Beam – Steel – Paint SP3



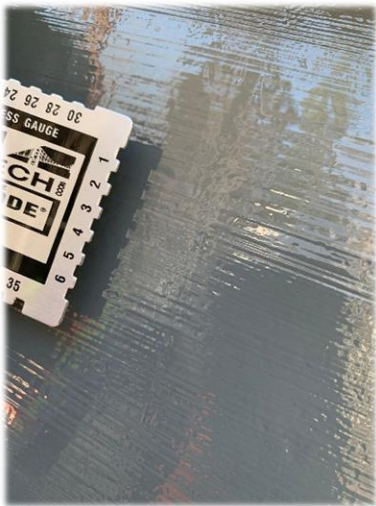
BEFORE SURFACE PREPARATION X-CUT



BRESLE TEST (SALTS)



SURFACE PREPARATION SP3 – SP1



APPLICATION



FINAL RESULT

Location #2 - Cross Beam – Steel – Paint SP2



BEFORE SURFACE PREPARATION



X-CUT



SURFACE PREPARATION SP2 – SP1



APPLICATION



FINAL RESULT

Location #3 Tower Leg IN – HDG – SP2



BEFORE SURFACE PREPARATION



BRESLE TEST (SALTS)



SURFACE PREPARATION SP2 – SP1



APPLICATION



FINAL RESULT

Location #4 - Tower Leg Ext – HDG – Paint – SP2



BEFORE SURFACE PREPARATION



X-CUT



SURFACE PREPARATION SP2 – SP1



APPLICATION



FINAL RESULT



Location #5 - X-Bracing - HDG – Paint – SP2

BEFORE SURFACE PREPARATION



SURFACE PREPARATION SP2 – SP1

APPLICATION



FINAL RESULT



GALVATECH TECHNICAL SUPPORT

PREPARED BY :

Maxim Dube,

Directeur Technique

Technical Director

NACE, Coating Inspector Level 2 – Certified 1671881

Cell : (819) 266-9615

maximdube@galvatech2000.com

www.galvatech2000.com